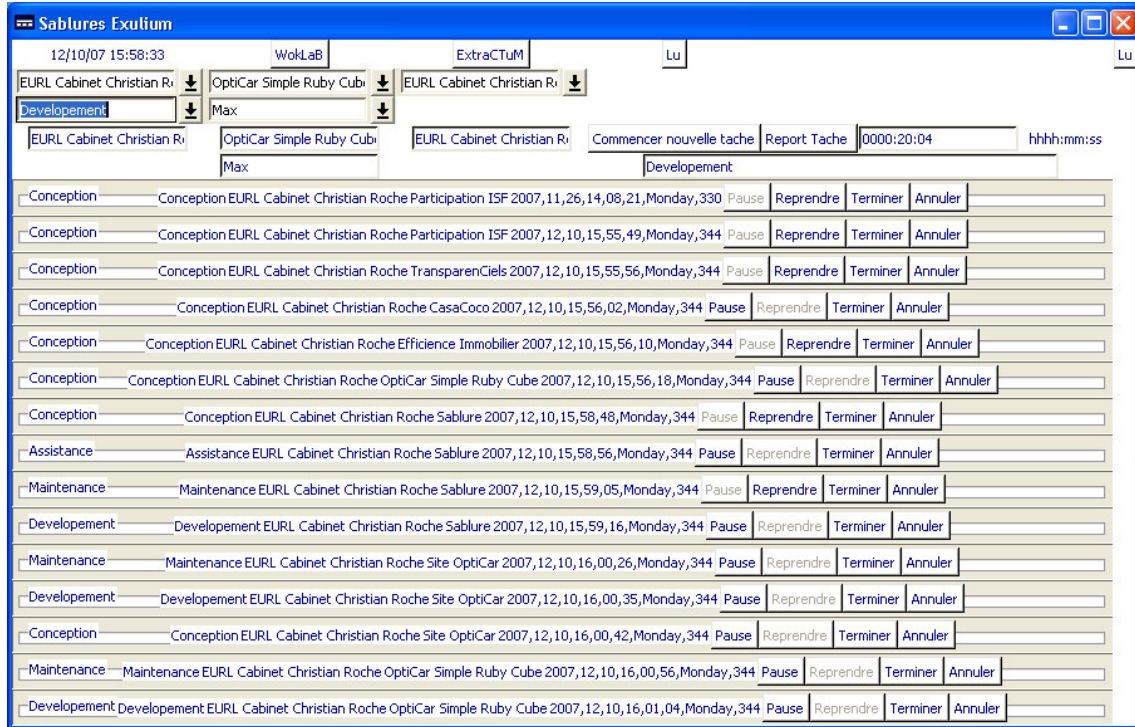
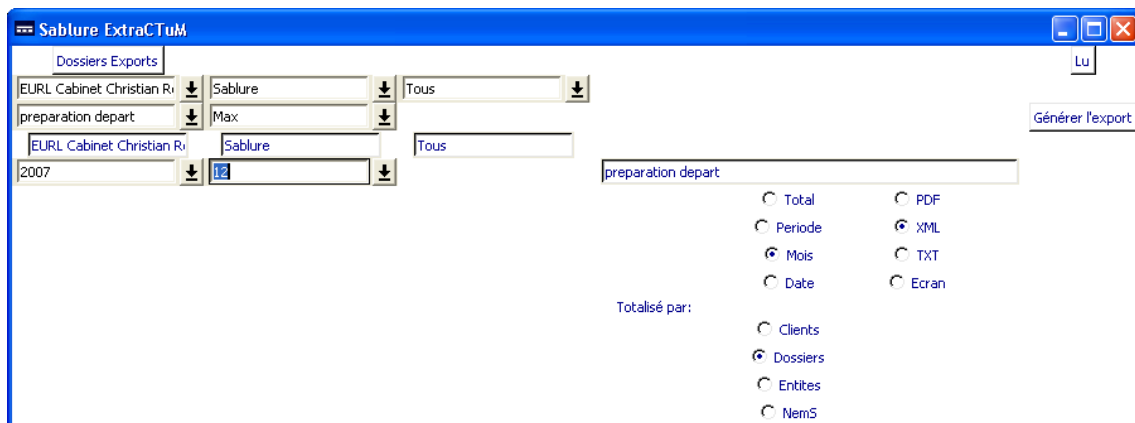


Introduction :

First here is a look of Sablure Exulium :



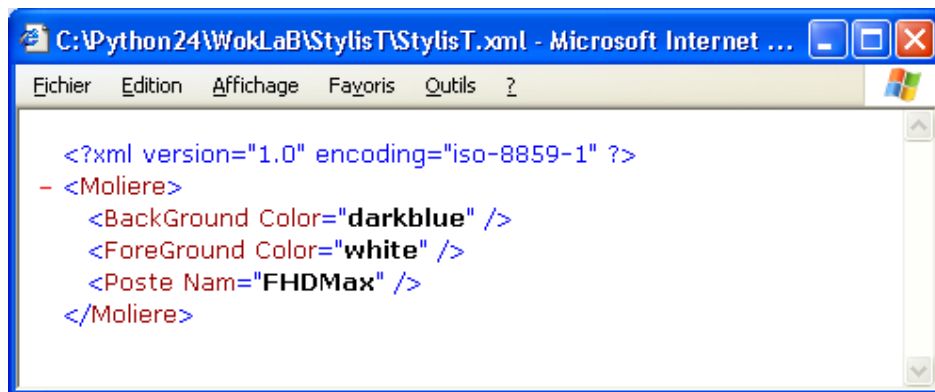
And here is a look of the time extractor (ExtraCTuM),



Customization: 1- ChronoX

When you start Exulium, here is a WokLaB button which opens the WokLaB Folder. From here there is the Stylist Folder and a Stylist File.

In this File you will define the name of your ChronoX : <Poste Nam= contain the begin of the name of the file which retains actions and time, here, the place is named FHDMax, Exulium adds ChronoX and it is in XML. Then, the File will here be named : FHDMaxChronoX.xml



```
<?xml version="1.0" encoding="iso-8859-1" ?>
- <Moliere>
  <BackGround Color="darkblue" />
  <ForeGround Color="white" />
  <Poste Nam="FHDMax" />
</Moliere>
```

So you can personalize with your name or place, don't forget to rename the ChronoX

2-Colors, Fonts, sizes and languages: Stylist

Sablure can now customize the colors of substantive text, fonts, and font sizes of the various elements and language

Each element is definable, you compose your presentation ideal

The list of colors is in DocStoR/couleurs.txt

And you will find a program to list your fonts in DocStoR/Polices

For bold type Bold = 'bold'

Bold = "for normal text

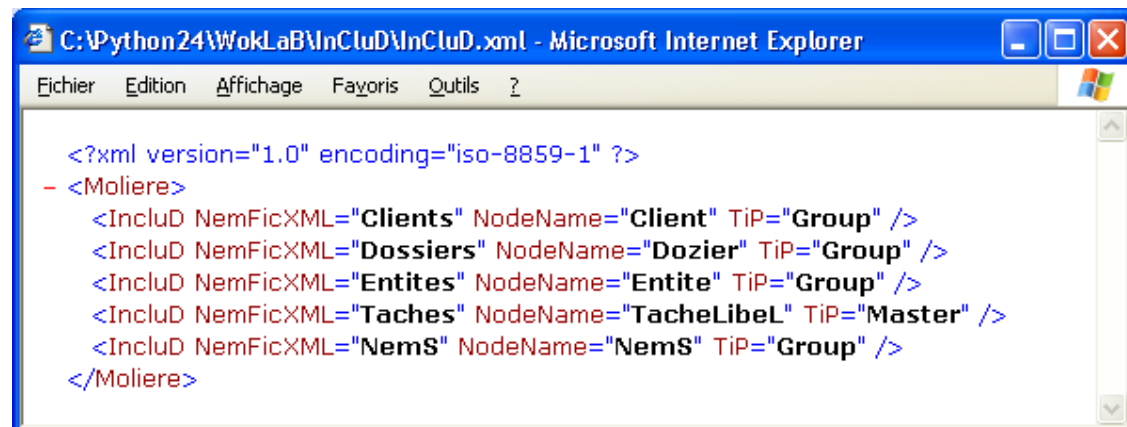
The texts and language are fully defined in the file LanGage.xml

3-Attributes and lists:

Version 0.2.1 to 0.2.6 provides polymorphism it is you who are defining and identifying the lists they pre-present.

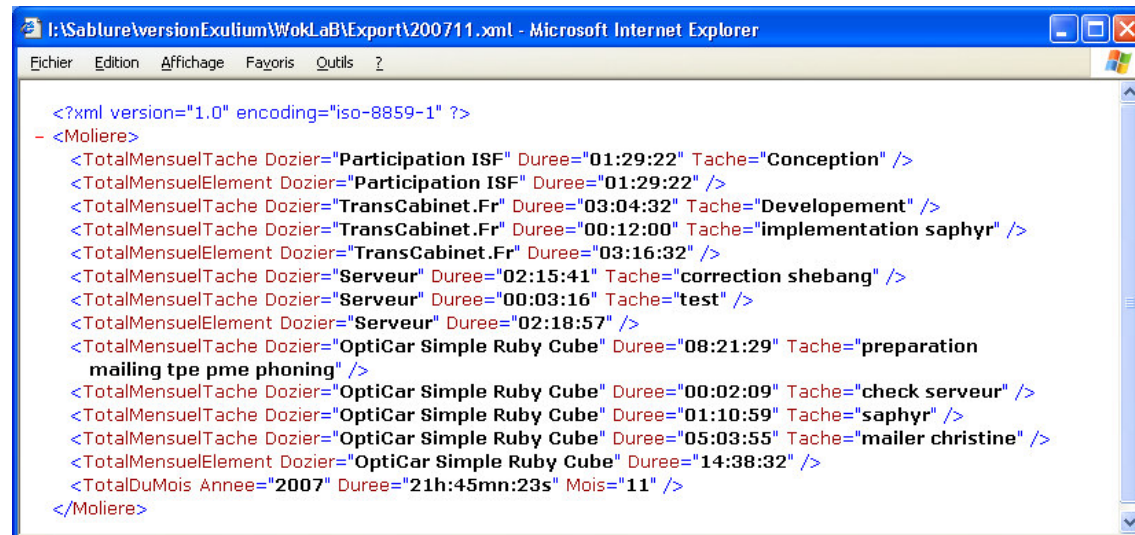
Here's how a works:

In the InCluD folder of the WokLaB you will find a file named InCluD.xml :



```
<?xml version="1.0" encoding="iso-8859-1" ?>
- <Moliere>
  <IncluD NemFicXML="Clients" NodeName="Client" TiP="Group" />
  <IncluD NemFicXML="Dossiers" NodeName="Dozier" TiP="Group" />
  <IncluD NemFicXML="Entites" NodeName="Entite" TiP="Group" />
  <IncluD NemFicXML="Taches" NodeName="TacheLibel" TiP="Master" />
  <IncluD NemFicXML="NemS" NodeName="NemS" TiP="Group" />
</Moliere>
```

The **NemFicXML** contains filenames (without. Xml) **NodeName** attribute contains the name of the node * of this file (attention is also the name that will be used in the consolidation of extraction: Dozier here:



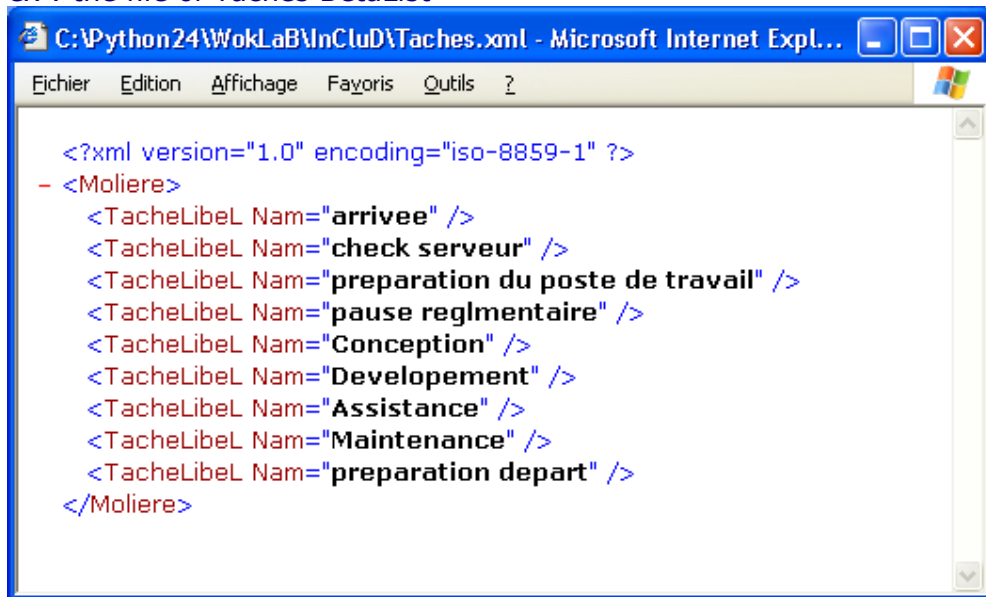
```
<?xml version="1.0" encoding="iso-8859-1" ?>
- <Moliere>
  <TotalMensuelTache Dozier="Participation ISF" Duree="01:29:22" Tache="Conception" />
  <TotalMensuelElement Dozier="Participation ISF" Duree="01:29:22" />
  <TotalMensuelTache Dozier="TransCabinet.Fr" Duree="03:04:32" Tache="Developement" />
  <TotalMensuelTache Dozier="TransCabinet.Fr" Duree="00:12:00" Tache="implementation saphyr" />
  <TotalMensuelElement Dozier="TransCabinet.Fr" Duree="03:16:32" />
  <TotalMensuelTache Dozier="Serveur" Duree="02:15:41" Tache="correction shebang" />
  <TotalMensuelTache Dozier="Serveur" Duree="00:03:16" Tache="test" />
  <TotalMensuelElement Dozier="Serveur" Duree="02:18:57" />
  <TotalMensuelTache Dozier="OptiCar Simple Ruby Cube" Duree="08:21:29" Tache="preparation
mailing tpe pme phoning" />
  <TotalMensuelTache Dozier="OptiCar Simple Ruby Cube" Duree="00:02:09" Tache="check serveurur" />
  <TotalMensuelTache Dozier="OptiCar Simple Ruby Cube" Duree="01:10:59" Tache="saphyr" />
  <TotalMensuelTache Dozier="OptiCar Simple Ruby Cube" Duree="05:03:55" Tache="mailer christine" />
  <TotalMensuelElement Dozier="OptiCar Simple Ruby Cube" Duree="14:38:32" />
  <TotalDuMois Annee="2007" Duree="21h:45mn:23s" Mois="11" />
</Moliere>
```

TiP attribute identifies the group, **TiP Group** is the general type of ID and **TiP Master** identifier identifies what is the stain itself, attention: there can be a **TiP Master** and can not be **NodeName "Tache"**

*node : in include.xml for exemple the name of node is **IncluD**

Then you can draw up a pre-list (you can always enter new values) in those famous files,

ex : the file of Taches BetaList



```
<?xml version="1.0" encoding="iso-8859-1" ?>
- <Molier>
  <TacheLibeL Nam="arrivee" />
  <TacheLibeL Nam="check serveur" />
  <TacheLibeL Nam="preparation du poste de travail" />
  <TacheLibeL Nam="pause reglmentaire" />
  <TacheLibeL Nam="Conception" />
  <TacheLibeL Nam="Developement" />
  <TacheLibeL Nam="Assistance" />
  <TacheLibeL Nam="Maintenance" />
  <TacheLibeL Nam="preparation depart" />
</Molier>
```

Note that the list is always constituted by the attribute **Nam**

Use USB Key on:

Install Sablures on your key and make sure that each position has required DLLs well. Install Sablures on each item if it does not.

You can withdraw the utility Font by deleting the folder DocsToR / Fonts, this utility is not necessary to operate Sablures.

Mac and Linux version:

I produced a Mac version as soon as I can buy one myself, and I will soon develop a Linux version.

If you specifically need I can provide you python sources on request, python is mobile on each system.

The use of non-compiled version (sources) allows the use of Sablures regardless of the system (used on key between a Mac, a Windows and Linux for example)

Here you can customize and pre-fill a substantive your exulium

Good work

Roche Maxime
Publisher and Developer
+336 7478 1280
roche.maxime@creativeinfinity.fr

Funded by the Cabinet EURL Christian Roche <http://www.cabinet-roche.com/>